



International Journal of Multidisciplinary Research in Science, Engineering and Technology

(A Monthly, Peer Reviewed, Refereed, Scholarly Indexed, Open Access Journal)



Impact Factor: 8.206

Volume 9, Issue 4, April 2026



International Journal of Multidisciplinary Research in Science, Engineering and Technology (IJMRSET)

(A Monthly, Peer Reviewed, Refereed, Scholarly Indexed, Open Access Journal)

Detection of Diabetic Retinopathy Using Deep Learning

Jensy.G¹, Madhangi.S², Dr.A.Vidhya³

B.Sc. Computer Science, Department of Computer Applications, College of B.S. Abdur Rahman Crescent Institute of
Science of Technology, Vandalur, Chennai, Chennai, Tamil Nadu, India^{1,2}

Assistance Professor, Department of Computer Application, College Of B.S. Absur Rahman Crescent Institute of
Science of Technology, Vandalur, Chennai, Chennai, Tamil Nadu, India³

ABSTRACT: RetinaGuard AI is an automated deep learning system designed to improve early detection of diabetic retinopathy (DR), a leading cause of blindness among working-age adults. By preprocessing retinal fundus images and leveraging CNN architectures such as AlexNet, MobileNet, ResNet, and EfficientNet, the system accurately classifies DR into five stages—No_DR, Mild, Moderate, Severe, and Proliferative_DR—based on key retinal features. Performance is validated using accuracy, precision, recall, and F1-score, ensuring clinical reliability. Beyond classification, RetinaGuard AI integrates stage-specific medical recommendations, automated alerts, a diagnostic dashboard, and a chatbot for patient education, offering a comprehensive, accessible, and user-friendly solution to enhance early diagnosis, reduce delays, and prevent vision loss.

KEYWORDS: Diabetic Retinopathy , Deep Learning ,Retinal Fundus Images ,Convolutional Neural Networks (CNNs), Early Detection

I. INTRODUCTION

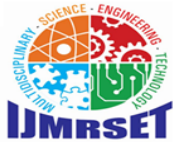
Diabetic Retinopathy (DR) is a major complication of diabetes and one of the leading causes of blindness among working-age adults worldwide. It develops silently as prolonged high blood sugar damages retinal blood vessels, often progressing to irreversible vision loss if not detected early. With the global rise in diabetes cases, the need for timely and accurate DR screening has become increasingly urgent.

BACKGROUND OF THE STUDY

Traditional diagnosis relies on ophthalmologists manually examining retinal fundus images to identify abnormalities such as microaneurysms, hemorrhages, and exudates. While effective, this process is resource-intensive, requires specialized expertise, and is often inaccessible in rural or underserved regions. Advances in Artificial Intelligence, particularly Convolutional Neural Networks (CNNs), have demonstrated strong success in medical image analysis, enabling automated feature extraction and accurate disease classification. Building on these developments, RetinaGuard AI integrates deep learning-based detection with patient-centric features such as stage-wise guidance, automated alerts, dashboards, and chatbot support, offering a comprehensive solution to enhance accessibility and prevent vision loss.

II. PROBLEM STATEMENT

Diabetic Retinopathy (DR) is a leading cause of vision loss among people with diabetes, often progressing unnoticed due to lack of regular screening and timely diagnosis. Manual examination of retinal fundus images by ophthalmologists is accurate but time-consuming, costly, and inaccessible in many underserved regions, while existing automated systems struggle with image variations, rely on single models, and lack patient-focused features. Most provide only classification results without medical recommendations, alerts, or interactive support, limiting usability and long-term monitoring. To address these gaps, RetinaGuard AI is proposed as an intelligent, automated, and user-friendly system that combines deep learning-based detection with chatbot guidance, alert mechanisms, visualization dashboards, and data storage, aiming to improve accessibility, timely treatment, and ultimately reduce the risk of vision loss.



International Journal of Multidisciplinary Research in Science, Engineering and Technology (IJMRSET)

(A Monthly, Peer Reviewed, Refereed, Scholarly Indexed, Open Access Journal)

AIM OF THE PROJECT

The primary aim of this project is to design and implement RetinaGuard AI, an intelligent, automated system for diabetic retinopathy detection that integrates deep learning classification, medical recommendations, alert mechanisms, visualization dashboards, and chatbot assistance into a single platform.

OBJECTIVE OF THE PROJECT

The key objectives of this project are as follows:

- To preprocess retinal fundus images for improved model accuracy
- To train and evaluate multiple CNN architectures (AlexNet, MobileNet, ResNet, EfficientNet).
- To classify DR into five severity stages: *No_DR*, *Mild*, *Moderate*, *Severe*, *Proliferative_DR*.
- To provide stage-wise medical recommendations for patient guidance.
- To generate automated email alerts for severe and proliferative cases.
- To visualize diagnostic results using charts and dashboards.
- To integrate chatbot assistance for patient awareness and education.

III. METHODOLOGY

The proposed system follows a structured process to ensure accurate detection and patient support. Retinal fundus images are acquired and preprocessed through resizing, normalization, noise reduction, and augmentation to improve clarity. Multiple CNN architectures (Sequential CNN, AlexNet, MobileNet, ResNet, EfficientNet) are trained, and the best-performing model classifies DR into five stages: *No_DR*, *Mild*, *Moderate*, *Severe*, and *Proliferative_DR*. Based on severity, the system provides medical recommendations, sends automated alerts for critical cases, and offers chatbot assistance for patient queries. Results are visualized through dashboards, while patient data is securely stored for long-term monitoring. This integrated framework ensures efficiency, accuracy, and accessibility in DR detection and management.

IV. EXISTING SYSTEM

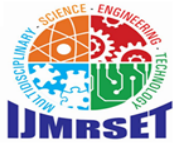
The existing system for Diabetic Retinopathy (DR) detection typically relies on a single deep learning model, most commonly DenseNet, which preprocesses retinal fundus images through resizing and normalization before classification into stages such as *No_DR*, *Mild*, *Moderate*, *Severe*, and *Proliferative_DR*. While DenseNet improves feature reuse and learning efficiency, current approaches mainly emphasize classification accuracy and lack advanced functionalities. They do not offer multi-model comparison, automated alerts for severe cases, interactive dashboards, or chatbot-based patient guidance. As a result, although effective in stage prediction, these systems remain limited in patient support and practical healthcare deployment.

V. PROPOSED SYSTEM

The proposed RetinaGuard AI system automates diabetic retinopathy detection and management using retinal fundus images. It integrates deep learning with multiple CNN architectures, preprocessing techniques, and stage-wise classification for accurate diagnosis. Severity-based recommendations, automated email alerts, and chatbot assistance enhance patient safety and awareness. Results are visualized through interactive dashboards, while secure database management ensures proper record-keeping and monitoring. Overall, RetinaGuard AI provides a comprehensive, user-friendly platform that improves accessibility, supports timely treatment, and reduces the risk of vision loss.

ADVANTAGES OF PROPOSED SYSTEM

- **High Accuracy & Reliability** – Multi-model comparison across CNN architectures ensures robust predictions even with varied image quality.
- **Automated Detection** – Reduces dependence on manual diagnosis, saving time and minimizing human error.



International Journal of Multidisciplinary Research in Science, Engineering and Technology (IJMRSET)

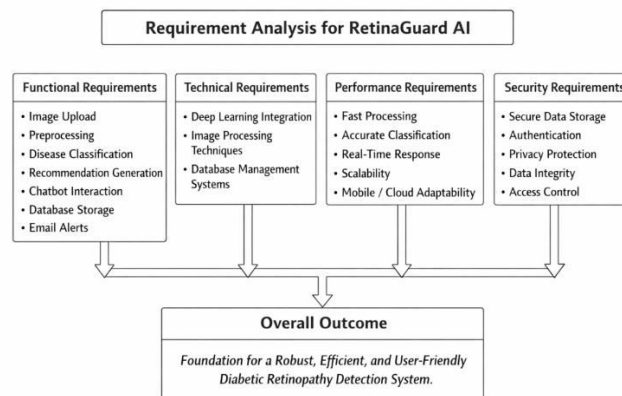
(A Monthly, Peer Reviewed, Refereed, Scholarly Indexed, Open Access Journal)

- **Stage-wise Recommendations** – Provides clear medical guidance for preventive care or urgent treatment based on severity
- **Critical Alerts** – Automated email notifications for severe cases improve patient safety and enable timely intervention.
- **Enhanced Usability** – Interactive chatbot, visual dashboards, and secure data management improve accessibility, engagement, and long-term monitoring.
- **Scalability & Accessibility** – Supports remote screening and telemedicine, making it practical for rural and underserved regions.

VI. DEVELOPMENT PROCESS

REQUIREMENT ANALYSIS

The proposed RetinaGuard AI system requires a robust framework to ensure accurate detection, classification, and patient support. It must allow users to upload retinal fundus images, preprocess them for clarity, and classify disease stages using deep learning models. The system should provide medical recommendations, chatbot interaction, email alerts for critical cases, and dashboard visualization, while securely storing patient data for long-term monitoring. Key requirements include fast processing, high accuracy, real-time response, scalability for future deployment, and strong security measures to protect patient privacy. This analysis forms the foundation for building a reliable, efficient, and user-friendly healthcare application.



INPUT ANALYSIS

The proposed RetinaGuard AI system primarily requires retinal fundus images as input, supporting formats such as JPG, JPEG, and PNG for compatibility across devices like smartphones, cameras, and computers. Users upload images through a web interface, and the system must handle variations in lighting, clarity, resolution, and noise using preprocessing techniques to ensure accurate detection. In addition to images, user details such as name, email, and optional medical information may be collected to personalize results, generate alerts, and maintain records. Input validation is essential to check file format, size, and quality, ensuring only secure and valid data is processed. These requirements enable the system to function reliably and deliver accurate, user-friendly healthcare support.

OUTPUT ANALYSIS

The RetinaGuard AI system generates outputs that provide clear medical insights and patient support. The primary output is disease stage classification into No_DR, Mild, Moderate, Severe, or Proliferative_DR, accompanied by stage-wise medical recommendations. For critical cases, automated email alerts notify patients and healthcare providers with diagnosis details and suggested actions. Results are also presented through visual dashboards with charts and graphs, while the chatbot delivers interactive guidance on symptoms, prevention, and treatment. All outputs are securely stored in the database, enabling users to track their condition over time and ensuring accessibility, accuracy, and usability.

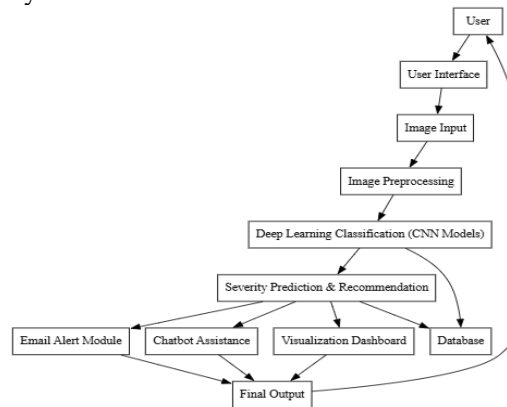


International Journal of Multidisciplinary Research in Science, Engineering and Technology (IJMRSET)

(A Monthly, Peer Reviewed, Refereed, Scholarly Indexed, Open Access Journal)

ARCHITECTURE DESIGN

The RetinaGuard AI system is built on a modular architecture that ensures smooth data flow and efficient operation. Users upload retinal fundus images through the input module, which are enhanced in the preprocessing module using resizing, normalization, contrast adjustment, and noise reduction. These processed images are then classified by multiple CNN models (Sequential CNN, AlexNet, MobileNet, ResNet, EfficientNet) into five DR stages, with the severity prediction module providing stage-wise medical recommendations. Critical cases trigger automated email alerts, while chatbot assistance offers instant guidance, and visualization dashboards present results clearly. All data is securely stored in the database module for long-term monitoring, making the system accurate, user-friendly, and reliable for practical healthcare deployment.



IMPLEMENTATION

The system is implemented in Python, combining deep learning, image processing, and web technologies. Users upload retinal images, which are preprocessed (resizing, normalization, noise reduction) before classification using CNN models like AlexNet, MobileNet, ResNet, and EfficientNet. Based on the predicted stage, medical recommendations are generated, and critical cases trigger email alerts. A chatbot provides interactive guidance, while results are stored in the database and displayed through dashboards. This pipeline ensures smooth data flow, accuracy, and usability.

IMAGE PREPROCESSING

Images are standardized using resizing, normalization, and noise reduction. Contrast enhancement highlights retinal features, while data augmentation (rotation, flipping, zooming) improves model generalization. Input validation ensures only valid formats (JPG, PNG, JPEG) are processed. This step improves clarity and boosts classification accuracy.

DEEP LEARNING CLASSIFICATION

Preprocessed images are analyzed by multiple CNN models to detect diabetic retinopathy stages. Features like blood vessel abnormalities and lesions are extracted, and images are classified into No_DR, Mild, Moderate, Severe, or Proliferative_DR. Model performance is compared using accuracy and precision, with the best model selected. Transfer learning improves efficiency and reliability.

SEVERITY PREDICTION & RECOMMENDATION

Classification results are converted into actionable advice. Early stages prompt preventive measures, moderate cases suggest closer monitoring, and severe stages recommend immediate medical attention. Recommendations are simple, user-friendly, and may include nearby hospital suggestions. Personalized alerts are also supported.

CHATBOT ASSISTANCE

The chatbot uses NLP to answer queries about symptoms, causes, prevention, and treatment. It provides personalized guidance based on classification results, operates 24/7, and simplifies medical information for users, improving accessibility and engagement.

EMAIL NOTIFICATION

In severe cases, the system sends automated email alerts with diagnosis results and recommendations. Emails are secure, timestamped, and can notify healthcare providers or family members. They also serve as records for long-term monitoring and reminders for follow-ups.



International Journal of Multidisciplinary Research in Science, Engineering and Technology (IJMRSET)

(A Monthly, Peer Reviewed, Refereed, Scholarly Indexed, Open Access Journal)

VII. RESULT

The proposed RetinaGuard AI system effectively performs automated detection and classification of diabetic retinopathy using retinal fundus images, tested under varying conditions of lighting, resolution, and quality to ensure accuracy and reliability. Input images are standardized through preprocessing before being analyzed by multiple CNN models, which classify them into five stages with improved accuracy through multi-model comparison. Stage-wise medical recommendations guide patients from routine monitoring to urgent consultation, while automated email alerts ensure timely intervention in critical cases. Interactive chatbot support, dashboard visualizations, and secure database storage further enhance usability, patient engagement, and long-term monitoring. Overall, the system demonstrates accurate classification, reliable recommendations, and efficient support, making it a comprehensive solution for diabetic retinopathy detection and management.

VIII. CONCLUSION & FUTURE ENHANCEMENT

CONCLUSION

The proposed RetinaGuard AI system provides an intelligent and efficient solution for early detection and classification of diabetic retinopathy using deep learning techniques. By integrating modules such as preprocessing, multi-model classification, stage-wise recommendations, chatbot assistance, email alerts, visualization dashboards, and secure database management, it offers a comprehensive healthcare platform. The system overcomes limitations of traditional diagnosis by improving accuracy, reducing manual effort, and enabling faster, automated predictions. Features like interactive guidance, timely alerts, and long-term monitoring enhance usability and patient safety, while scalability ensures adaptability for real-world applications. Overall, RetinaGuard AI demonstrates high performance, reliability, and user-friendliness, highlighting the potential of artificial intelligence in preventing vision loss and improving medical diagnosis.

FUTURE ENHANCEMENT

Although RetinaGuard AI performs effectively, several improvements can further enhance its functionality and scalability. Expanding the dataset with diverse retinal images will improve accuracy and generalization, while extending detection to other eye diseases such as glaucoma and cataract can make it a multi-disease diagnostic platform. Mobile app integration and cloud-based deployment will increase accessibility and support large-scale usage. Advanced techniques like Vision Transformers, ensemble models, and Explainable AI can boost performance and provide transparent predictions. Enhancing the chatbot with personalized, multilingual support and integrating with hospital management or telemedicine systems will improve usability and real-world healthcare adoption.

REFERENCES

- [1] V. Gulshan et al., "Development and Validation of a Deep Learning Algorithm for Detection of Diabetic Retinopathy," JAMA, 2016.
- [2] H. Pratt et al., "Convolutional Neural Networks for Diabetic Retinopathy Detection," Procedia Computer Science, 2016.
- [3] M. Voets et al., "Replicating Deep Learning Performance for Diabetic Retinopathy Detection," IEEE Access, 2019.
- [4] M. Tan and Q. Le, "EfficientNet: Rethinking Model Scaling for CNNs," ICML, 2020.
- [5] Z. Li et al., "Deep Learning for Multi-Class Diabetic Retinopathy Detection," IEEE Transactions on Medical Imaging, 2021.
- [6] S. Ting et al., "Artificial Intelligence and Deep Learning in Ophthalmology," British Journal of Ophthalmology, 2020.
- [7] R. Gargeya and T. Leng, "Automated Identification of Diabetic Retinopathy Using Deep Learning," Ophthalmology, 2017.
- [8] J. Krause et al., "Grader Variability and the Importance of Reference Standards," Nature Medicine, 2018.
- [9] A. Rajalakshmi et al., "Validation of Deep Learning Algorithms for DR Detection," Lancet Digital Health, 2018.
- [10] World Health Organization, "Global Report on Diabetes," WHO, 2021.



INTERNATIONAL
STANDARD
SERIAL
NUMBER
INDIA



INTERNATIONAL JOURNAL OF MULTIDISCIPLINARY RESEARCH IN SCIENCE, ENGINEERING AND TECHNOLOGY

| Mobile No: +91-6381907438 | Whatsapp: +91-6381907438 | ijmrset@gmail.com |

www.ijmrset.com